

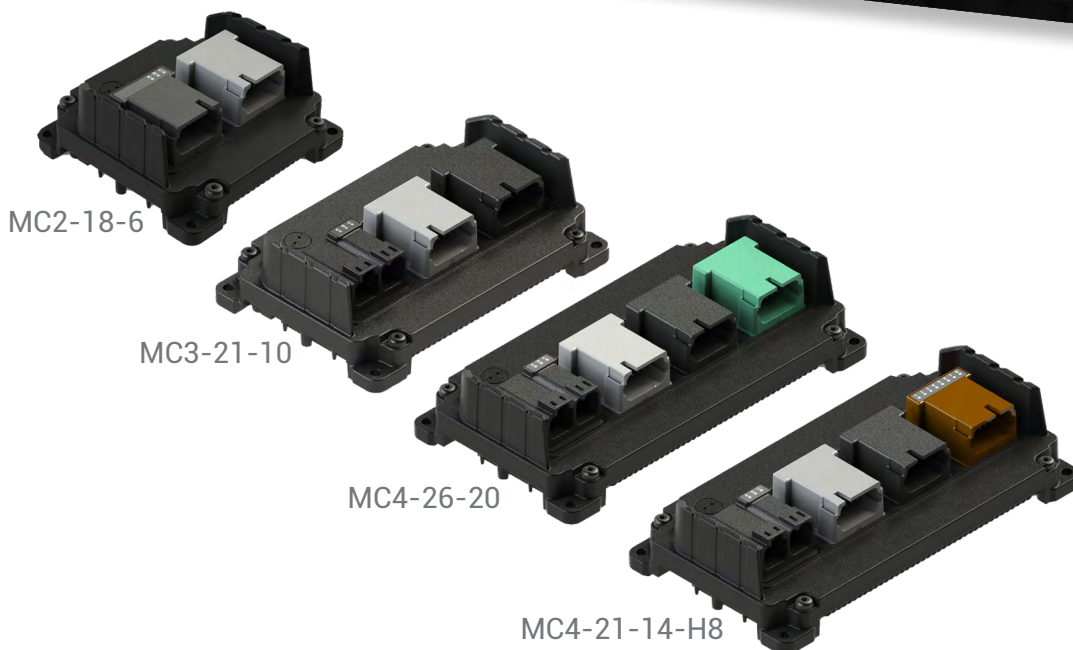
Built to Perform in High Heat  
and High Vibration Areas

Easy to Scale Up or Down  
Within the Hardware Family

Features Universal Inputs and  
Flexible Proportional Outputs

Expand Equipment Control With  
High-Current Output Option

Configure Quickly with ACE  
or Program with CODESYS



## RUGGED CONTROLLERS FOR HARDWORKING EQUIPMENT

uControl™ mobile machine controllers deliver extreme durability with precision control. With a complete family of scalable machine controllers, the uControl series offers flexible I/O options for a variety of equipment needs and applications. Featuring multiple CAN interfaces, extensive outputs and an available high-current output option, uControl mobile machine controllers can handle any job, big or small.

Simplify your equipment control using reliable, software selectable, universal outputs with feedback. uControl mobile controllers work great with extended low voltage operation and provide short circuit and overload protection.

uControl mobile machine controllers also feature a rugged IP69K-sealed aluminum enclosure with gel potting that allows it to be mounted where you need it, including high-heat and high-vibration areas like in engine compartments or on attachments.

uControl mobile controllers provide flexibility to develop your system the way you want. Quickly create intuitive and powerful controls in ACE™ from Enovation Controls, or program on your own using CODESYS.

| MODEL                    | MC2-18-6   | MC3-21-10  | MC4-26-20  | MC4-21-14-H8      |
|--------------------------|------------|------------|------------|-------------------|
| <b>TOTAL INPUTS</b>      | 18         | 21         | 26         | 21                |
| <b>TOTAL OUTPUTS</b>     | 6 (4A)     | 10 (4A)    | 20 (4A)    | 14 (4A) + 8 (15A) |
| <b>CAN (2.0B, J1939)</b> | 2 Channels | 3 Channels | 3 Channels | 3 Channels        |
| <b>SENSOR SUPPLY</b>     | 1 Supply   | 1 Supply   | 2 Supplies | 2 Supplies        |

## HIGHLY CONFIGURABLE OUTPUTS

Advanced Load Management

Dual Range Feedback

High / Low Side Mode

H-Bridge Mode

Parallel Mode

**IP  
69K**

**CE**  
Pending

**e-Mark**  
Pending  
**REACH / RoHS**

**ISO-13766**  
Pending

Contact Our Sales Team for Details

Build Applications Faster with the Easy Drag-and-Drop Interface

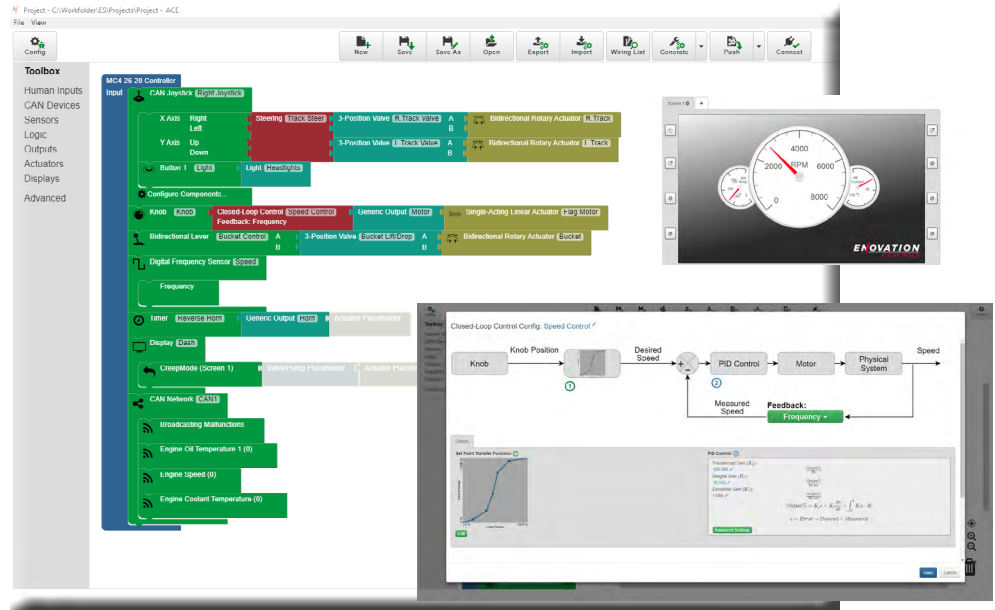
Create Coordinated Controller and Display Configurations

Tune and Calibrate Your Equipment Using Live Mode

Easily Transfer Projects Between uControl Series Controllers

Integrated CAN/J1939 and Pre-Configured Part Libraries

Generate Helpful Wiring Lists



## BUILD POWERFUL CONTROLLER AND DISPLAY APPLICATIONS WITHOUT WRITING A LINE OF CODE

ACE is a powerful and easy-to-learn software tool to simplify and speed up control system development. ACE was designed for both machine experts with no coding experience and experienced programmers looking for a more efficient way to work. Using a built-in library of components and functions, simply drag-and-drop blocks and features together to create an application. ACE's innovative auto-coding environment does all the coding for you, saving you valuable time and unlocking valuable engineering resources.

ACE doesn't sacrifice power for convenience. The rich library of functions make it possible to achieve both simple and complex control with unlimited horsepower for any

system need. Logic blocks make it easy to create powerful timer functions with easy to understand triggers. ACE even simplifies building closed-loop control with feedback and helps users configure PID functions.

ACE also makes it easy to design coordinated display configurations for PowerView® displays. Designing intuitive, effective interfaces only takes a few minutes and can easily be converted between different display hardware.

When you're all done, ACE also takes the pain out of wiring by generating a list of wiring instructions that map each connector and pin of the controller to your inputs and outputs. Conquer complexity with ACE.